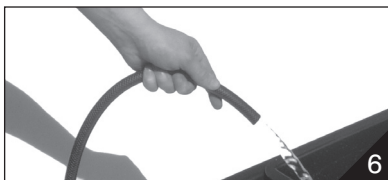
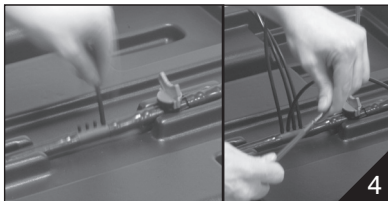
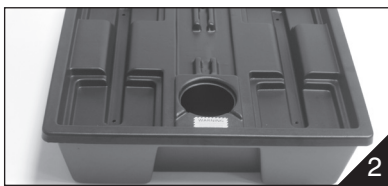
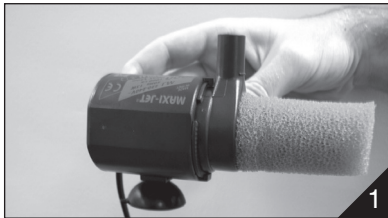




ORIGIN

Set-up instructions for Origin wide delivery systems



	Size (cm)	Tank	Volume	Support tray	No. pots	Pot size	Delivery tube pcs	2 L/H drippers	Flood drippers	Dripper tube	Water pump
Large Wide	160 x 75	1	120L	2	8	11L	3	8	8	8	1
					8	18L	3	8	8	8	1
XL Wide	190 x 90	1	180L	2	8	18L	3	8	8	8	1
					8	25L	3	16	16	16	1

STEP ONE

Assemble the pump:

- Slide the stand into the pump base
- Push the rubber sucker into the base of the stand
- Push the plastic strainer onto the pump inlet
- Push the blue foam filter over the plastic strainer

STEP TWO

Place the support tray(s) over the reservoir tank.

STEP THREE

Fit the delivery tube to the support tray, so that the mixing tap is directly opposite to the tank access point (to be covered by the red cap).

STEP FOUR

Warm the dripper pipe in warm water and push the pipes onto the fittings. Now place your Origin system in the location you wish to use. Insert the dripper into the opposite end of the piping. See over for recommended dripper usage.

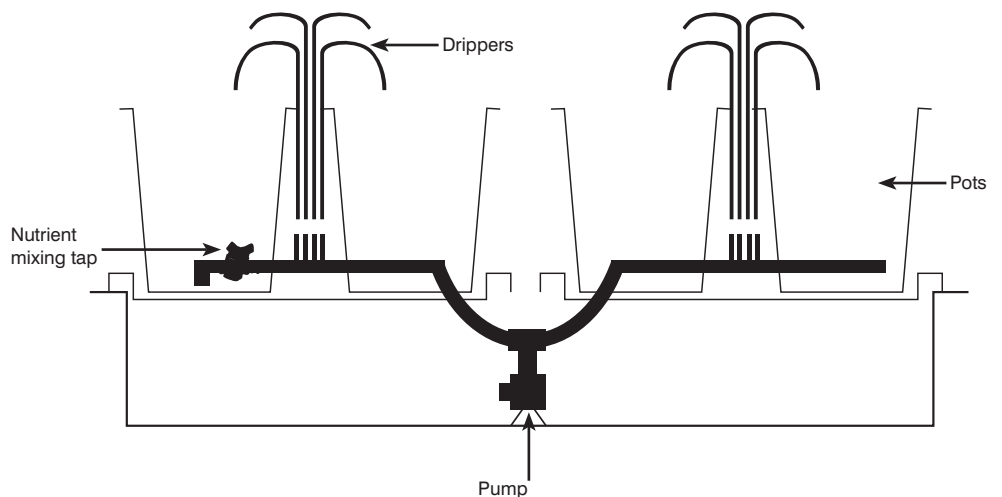
STEP FIVE

Connect the delivery tube to the pump outlet.

STEP SIX

Add water to the reservoir tank, see the relevant chart to determine the correct amount.

YOUR COMPLETE ORIGIN SET-UP



PLACE THE ORIGIN TANK IN POSITION

Ensure that the surface on which the Origin is placed is level. If placed on a bench or raised surface ensure that the base of the tank is supported and that the bench can support the weight of the tank when full.

FIT SUBMERSIBLE PUMP; PLEASE KEEP PUMP INSTRUCTIONS

Your pump is a NEWA Maxi Jet 1000. Place the pump on the base of the tank in the designated area and shake to displace air bubbles allowing water in. Push down-pipe of delivery system onto the pump outlet. The pump should fit securely on the base of the tank with the rubber sucker securing it in position. After completing all assembly instructions and filling your tank, start pump to test. Arrow drippers will drip slowly, Flood drippers will flow freely. Check all drippers work correctly.

ADD NUTRIENTS ACCORDING TO LABEL INSTRUCTIONS OR GROWING SCHEDULE

ADDING NUTRIENTS AND USING THE MIXING TAP

Add the nutrients according to the label instructions. Open the tap and run the pump for 5 minutes before starting the feeding cycle.

GUIDANCE FOR PLANTING

Only strong, healthy transplants or cuttings should be placed in the Origin system. Pots or plastic wraps (Rockwool blocks) should be removed, but do not wash off any propagation medium. Plant so that chosen medium for growing just covers propagation block, but without burying seed leaves or first true leaf.

Inert open draining medium (clay pebbles, Rockwool cubes) should be thoroughly wetted and given time to drain before planting.

Soil-type media (coco, compost) should be damp throughout before planting.

SUGGESTED SYSTEM RUNNING TIMES

Experience will show the best way to run the Origin systems, but these are guidelines for beginners. It is a good idea to use a 15 minute segmental timer to automate the system.

YOUNG PLANTS

It is better to run the system for a few short periods than one long watering. Young plants need less water than mature plants. Slight under watering is better than over watering. 1–2 periods per day will usually be suitable for young plants. It is a good idea to use a 15 minute segmental timer to automate the system. Do not overfeed when young. New plants will be OK at approximately half dose nutrient strength.

MATURE PLANTS

Observation of the plant is needed to decide on the amount of watering.

NO media should be allowed to dry out completely.

The maximum number of floods is 1 “on” period per hour during daylight hours, though most fully mature plants will not need this many.

MAINTENANCE

There are no daily tasks associated with your Origin system. Maintain solution strength and pH according to nutrient label instructions or growing schedule. The nutrient solution should be completely changed every 14–21 days, or more often depending on relative plant maturity, speed of growth and environmental conditions.

All the drippers should be checked occasionally to ensure correct flow rates, and the system should be flushed thoroughly with a weak acid solution or other cleaning agent between crops and then flushed thoroughly with water before replanting. Plant Magic Pure Clean can also be added to nutrient solutions to prevent blockages.

TIPS/HINTS

Solution heating should not be necessary except where environmental conditions dictate (low night-time temperatures).

When changing solution, plants may benefit from one watering with just water to prevent any build up of unused nutrient salts (particularly in soil type media).

ELECTRICAL SAFETY FIRST

1. Ensure that your electricity supply incorporates an RCCB protection device, or alternatively use a socket mounted RCCB power breaker unit.
2. Ensure pump is connected in accordance with manufacturer’s instructions.
3. Always switch off electricity supply before making contact with nutrient solution in tank.

ORIGIN SYSTEM COMBINATIONS

GROWING MEDIUM	DRIPPER
Clay Pebbles	Flood (blue)
Rockwool Growcubes	Flood (blue)
Coco Fibre	Arrow (black)
Copito	Arrow (black)
Soil	Arrow (black)
Mapito/PU Foam	Flood (blue)

ORIGIN FEEDING GUIDE

	Feed Time Guide for coco/soil	Feed Time Guide for mixed media	Feed Time Guide for pebbles
Start	1x 15 minute feed per day	2x 15 minute feeds per day	2x 15 minute feeds per day
Veg	2 or 3x 15 minute feeds per day	3x 15 minute feeds per day	3–4x 15 minute feeds per day
Flowering	3–5x 15 minute feeds per day	4–5x 15 minute feeds per day	4–6x 15 minute feeds per day

Timings are for guidance only. For the best results adjust feeds according to the appearance of your plant

P0001149